



@howellsvets



@howellsvets

www.howellsvets.co.uk

01347 823678
York Road, Easingwold YO61 3EB



WHAT'S ON

Show Season:

Come and say hello to us at the North Yorkshire County Show held at Otterington Hall in Northallerton on Sunday 21st June 2026

We are also attending the following shows in July. Please pop by our stand if you are visiting.

- **Huby and Sutton Show Sunday 5th July**
- **Driffield Show Wednesday 22nd July**
- **Borrowby Show Saturday 5th July - show vet**
- **Boroughbridge and Aldborough Show Sunday 26th July- show vet**
- **Ryedale Show Tuesday 28th July**

VET'S VIEWPOINT:



Written by
Ellie Button MA,
Vet MB, Cert AVP
(Cattle), MRCVS

We all love this time of year, when the grass really gets going and the fields are green and lush. Spring is behind us, and the calves and lambs growing fat and strong in the fields.

Thoughts turn to field work and whether the weather will be kind to us....

Before immersing yourself in silage making, take some time to evaluate your spring - how did it go? If you were disappointed by barren ewes or low lambing percentage, now is a great time to have those empty ewes blood tested for toxoplasma and enzootic abortion. For unvaccinated flocks, this testing is subsidised, so be sure to make the most of the opportunity. On the cattle side, the animal health and welfare pathway is still available for a funded BVD check test and review.

If your lambs are not thriving as you would like, consider faecal samples to check for parasites, and don't forget the importance of feeding both ewes and lambs well to help prevent mastitis in the ewes. This is often a good time of year for a flock health review, to discuss lambing time whilst it is fresh in your mind, so we hope to see you soon for an animal health and welfare pathway or red tractor health plan. Enjoy the sunshine! Ellie.

Monitoring Lamb Performance



Monitoring lamb performance is vital for keeping your lambs healthy, growing well and making your flock profitable.

Regular weighing helps you check growth rates and quickly spot lambs that are not thriving, allowing action to be taken before problems worsen. **Body condition scoring** is a simple hands-on way to assess fat and muscle cover, helping you judge whether your lambs are getting enough nutrition and are developing properly.

Faecal egg counting is an important tool for monitoring worm burdens, which can significantly reduce feed efficiency and weight gain in lambs. By testing faecal samples, you can identify parasite levels and only treat lambs when necessary, helping reduce treatment costs and slow wormer resistance.

Carrying out **post-mortems** on any lamb losses is also important, as it can identify the cause of death, such as disease, parasites, poor nutrition or management issues. This information can then be used to prevent further losses within your flock. Using these monitoring methods together gives you a clearer picture of flock health and performance, helping improve lamb growth, welfare and overall farm efficiency.



FECPAK Testing

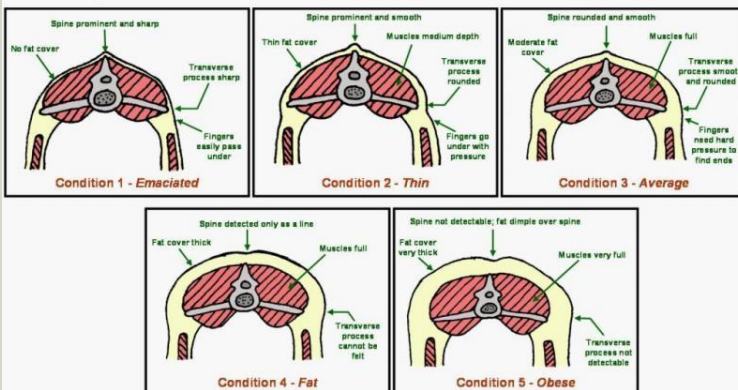
With the lambing season finished and moving towards summer, now is the time to be monitoring your lambs and calves that have been turned out to ensure you are getting the best out of them. A big part of this involves monitoring for worm burdens, the risk for *Nematodirus* in lambs has now passed its peak so we now need to focus on other gastrointestinal worms that could impact your flock or herd.

Lambs and calves need exposure to a low level of these worms to help build a degree of immunity, but if the burden becomes too large it will have detrimental effects to your livestock, it can cause scours, weight loss, anaemia and potentially even death depending on the severity.

This is where regular FECPAK's really help make a difference. It is a simple test run in-house by our team at our farm dispensary and results are back within 24hrs. By testing every 3-4 weeks over the summer and into autumn, you will be able to monitor the worm burden and if the eggs per gram (EPG) becomes too high we can treat effectively, at the right time and with the correct product.

We have a team of registered animal medicines advisors at our farm dispensary who work in conjunction with our vets, they are available by phone or in the shop to discuss and advise which treatment is right for your farm.

Body Condition Scores – Sheep/Goats



Adapted from "Body Condition Scoring of Sheep" by J.M. Thompson and H. Meyer (Oregon State University)

