

# RUMINANT NEWSLETTER

## SEPTEMBER 2025



@howellsvets



@howellsvets

www.howellsvets.co.uk

01347 823678

York Road, Easingwold YO61 3EB

## WHAT'S ON

Join us for a pie supper and topical farm discussions at the Gavel Café, Thirsk Auction Mart



Monday 6<sup>th</sup> October 6:30-9pm: **What the Fluke?**

Rachael Pond MRCVS  
Cattle and sheep farmers

Monday 10<sup>th</sup> November 6:30-9pm:  
**Cattle: Reaching the Finishing Line**

Leanne Forde – Archer MRCVS  
Ben Strugnell MRCVS

### Making the Most of Medicines Course for Red Tractor Compliance

Monday 1<sup>st</sup> December 3pm-5.00pm: please contact the practice  
to book your place or email [meetings@howellsvets.co.uk](mailto:meetings@howellsvets.co.uk)

Trainer: Ellie Button MRCVS



## GETTING AHEAD: AUTUMN HOUSING

### Cattle housing Checklist

- ☐ Calf respiratory vaccinations
- ☐ Cow pregnancy diagnosis
- ☐ Cow body condition scoring
- ☐ Health monitoring blood samples
  - ☐ CHECs samples
  - ☐ Trace element monitoring
  - ☐ Animal health and welfare pathway
- ☐ Parasite control treatments
  - ☐ Worming
  - ☐ Fluke
  - ☐ Lice/ mange
- ☐ Winter forage analysis for trace element supplement decisions

Call the practice  
and select  
option 1 to book  
in your autumn  
vet jobs



We offer forage sampling and analysis and tailor-made mineral supplementation plans. Ask Pippa in dispensary for more information.

The threat of pneumonia is looming. Review your respiratory vaccination protocols to ensure you are using the best vaccines for your farm. Book a visit for us to do nasal swabs to see what is most appropriate for your enterprise. We may be able to get sponsorship for the lab testing. Getting your usual vaccine a bit cheaper is unlikely to improve anything – why not talk to us about the newer options for preventing respiratory disease in your herd?

# VET'S VIEWPOINT



Leanne Forde-Archer  
BVSc MRCVS

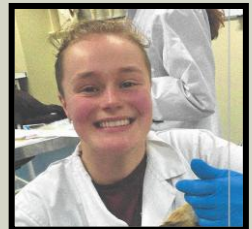
After a very warm, dry summer, we are all ready for autumn and hopefully some rain. Over the summer, one of the main point of conversation has been the threat of Blue tongue (BTV) and whether to vaccinate. There have been several reports of clinical disease over the summer. Despite the headline images of animals suffering from the disease and high mortality in sheep, we must remember that one of the major impacts of this disease is risk to reproductive performance. Unless you vaccinate, a BTV challenge will impact fertility – expect low pregnancy rates, irregular returns, abortions and increased pre-weaning mortality. I am pleased to say that vaccine uptake across

the practice has been excellent, and the vaccine is readily available for those who are yet to vaccinate. I have always enjoyed a good cattle PD session after housing, and I am hoping this terrible disease does not spoil the outlook for next spring. Please give me a call to discussion vaccination for your stock.

## PRACTICE NEWS

### New Vets

We are delighted to welcome Sophie to the farm veterinary surgeon team. Sophie is a local from York and very eager to get out on farm. We hope you make her feel welcome.



## DISPENSARY UPDATE: OUR 7<sup>TH</sup> YEAR AS DOWNLAND MEMBERS

We are fortunate to be in the privileged position of being a veterinary practice and a member of a large “Trade” organisation; this means that clients and customers alike can benefit from weekly van deliveries of all your vaccines, medicines and everything they used to get from a merchant. You can now access our huge animal health range to get the best product for your situation at a fair price and backed by sound advice from one of our five SQPs or a vet of your choice.

We have decades of experience at sourcing the most cost-effective Prescription Only Medicines” and have the huge advantage of knowing your enterprise from veterinary health planning and regular medicine reviews. You know that you can trust us to make the right choice for your livestock.

### Our Shared vision

To be the go-to place for farmers, recognised for our exceptional vets and RAMA's who provide invaluable advice and solutions for our farming community

### Our Shared Values

KNOWLEDGE  
QUALITY  
INDEPENDENCE  
INTEGRITY  
LOYALTY

### Our Shared Mission

Focusing on education we provide practical knowledge and guidance to equip our team with the tools we need for our success.



**DOWNLAND<sup>®</sup>**  
Partners in Farming Health



*Independent and proudly supporting our farming community for over 30 years*